

# What can Unify2 do for your Stores?

## Unify2 Features

- PLU / Item File Maintenance
- Price Zones, Districts, Regions
- Pricing Support Options by Zone
- Bar Code File Maintenance
- Bar Code Cross Reference Table
- Cash and Sales Handling
- Batch Processing
- Audit Sale Logs by Location
- Vendor File Maintenance
- System Security / Passwords
- Inventory Management Reports
- Store to Store Transfers
- Store Check Up Polling Status
- Item Image Support
- Excel Reporting
- Import / Export Files

## Optional Modules

- Uni-EYE Store Surveillance
- Store Inventory Replenishment
- Item Movement / Historical Analysis
- Stock Transfer Alert
- Customer Profile Maintenance
- Bar Code / Label Printing



## Multi store management software

Take control with the latest development in point of sale host support systems: **Unify2**

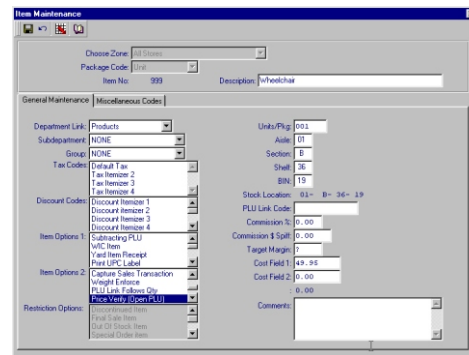
**Unify2** monitors and manages your retail stores; it is a powerful yet affordable GUI host support solution that operates under Windows 98, NT, 2000, and XP. **Unify2** raises the bar with a new level of sophistication and enterprise-wide control for chain store management. Monitoring vital store operations like store cashier and balancing, loss prevention procedures, and just in time inventory replenishment, can help your business realize its full potential in today's competitive retail environment.

Your stores will be more efficient if they are grouped similarly

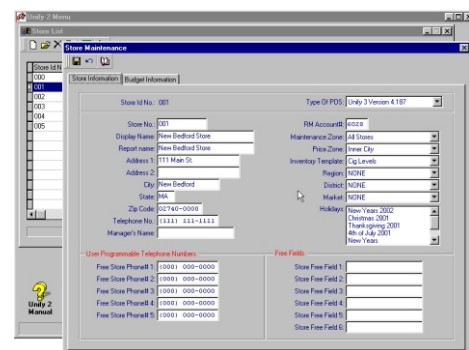
**Unify2** separates your stores geographically, by type, size, or however you see fit through the use of **Markets, Districts, and Regions**. With your stores properly grouped, your administrators will be able to efficiently run reports or create purchase orders by market, district, or region.

What if you want to change the price of an item *only* in your Kansas stores? Or, what if an item is taxable *only* in your Colorado stores? **Unify2** has you covered. **Price Zones** allow your stores to be grouped into similar pricing schemes; group your stores into different price regions within your region, city, state, country, or even the world. Likewise, selective stores can be linked to different **Maintenance**

**Zones**, which will allow you to have different item options for the same item at different stores. Like tax; certain items can be taxable in one state but not taxable in another state. You will see immediate time saving results with **Unify2** assisting in your store management responsibilities.



Conduct All Item Maintenance From Headquarters



Maintain Each Store From One Location.

Maintain your stores easily from one location

Use your corporate headquarters and **Unify2** to maintain items, store information, and employees; even maintain customer information with the optional **customer module**. Ideal for large companies with a

corporate location and multiple stores, **Unify2** empowers your administrative staff to monitor and manage your stores whether they are down the street or across the ocean. As fit as **Unify2** is to large retail chains, however, it can be used in a single store unleashing powerful store surveillance functions. It can be configured to handle single seat support departments or handle many seats in a sophisticated WAN environment, which many larger operations require in today's competitive environment. Whether you are operating one store or thousands of stores, **Unify2** will save you and your company time and money.

Item Number	Description	Cost	Old Price	New Price
444	1 Value Flat Accessories	0.00	0.00	0.00
498	1 Tool Item	5.00	11.00	5.00
500	1 Tool Unit	0.00	52.00	0.00
500	2 Tool Pack	0.00	56.00	0.00
500	4 Tool Case	0.00	52.00	0.00
600	1 Video	0.00	36.00	0.00
600	1 Student	0.00	25.00	0.00
601	1 Use Fee	0.00	0.00	0.00
219	1 Customer Supporter Retail	0.00	91.00	0.00
1	1 Membership Fee	1.00	25.00	1.00
6	1 Super Cut	0.00	6.00	0.00
7	1 Super Cut Classic	0.00	10.00	0.00
8	1 Super Cut Supreme	0.00	0.00	0.00
9	1 Super Cut	1.00	1.00	1.00
10	1 Super Cut	0.00	10.00	0.00
11	1 Super Cut \$1.95	0.00	4.95	0.00
12	1 Super Cut \$1.95	0.00	3.95	0.00
703	1 Super Braque Cannon	199.00	499.00	199.00
777	1 Super Cut Package	11.00	20.00	11.00

Unify2 Changes Prices Globally

## Perform mass price changes in a snap

**Unify2** provides a unique and welcome procedure for performing redundant and tedious mass price changes. Say you want to increase the price for items in a particular sub-department by a specific dollar amount or percentage. Instead of tediously changing each item's price, use **Unify2's Global Price Change** to perform all the changes meeting your criteria in a snap. And, with a fast Progress database, it really is a snap.

Perform price changes for specific price zones for a range of inventory items in a specific department, sub-department, or

group. **Unify2's** Global Price Change makes price changes for you in a wide variety of methods; change prices globally by **gross margin, item markup, \$ change from retail, or % change from retail.**

## Quickly build your item file with Item Templates

**Unify2's Item Template** module is a great tool, which can assist you greatly in the building of your item file. Once built they provide the ability to pre-assign inventory item attributes based on the item's Department, Sub-department and Group classification. Most items within the same classification will possess the same attributes; if this is the case in your store, the multitude of item attributes may be assigned with the mere click of a button.

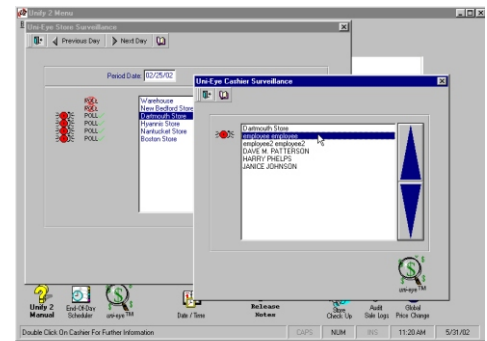
## Your data is safe with a powerful and reliable Progress database

**Unify2** utilizes the Progress Relational Data Base Management System (RDBMS). This is the same database type used by **Unify3** Point-of-Sale. Progress is a powerful and reliable database using advanced relational database technologies. A Progress database is shipped with **Unify2**, so there is no additional database to purchase and install.

## Make sure your stores interfaced and posted properly

**Unify2** interfaces with Unify3 and Unify1 stores easily. Once data is passed from your stores to **Unify2**, importing the store data is as easy as selecting a menu option, and it can even be automated. To make sure all of your stores properly sent data, you can use the **Store Check Up** feature. This feature allows you to quickly view the specific communication activity for either all stores or individual stores for a specific date. If there was a

communication problem, you will know right away.



Reduce Loss with Store and Cashier Surveillance

## Keep an EYE on your stores and cashiers

You'll save time, money, and productivity with the **Uni-EYE** optional module. Cashier / store auditing enables you to review your sales reports, and store audits in minutes instead of hours, so you can re-deploy valuable home office administration personnel to other important tasks. **Uni-EYE** store / cashier audit system empowers your corporate administrators with easy-to-use graphical, security tools allowing them to quickly and accurately identify cashier and store irregularities long before they get out of hand.

For more information on **Unify2**, download the White Paper at [ospreyretailsystems.com](http://ospreyretailsystems.com)



Unify2 is sold by: